



Sarkhej T.P-85, F.P-46, Near Zainab Residency,  
Sarkhej, Ahmedabad.

For further inquire contact on : **+91 9879539666**  
**+91 9898881234**

Developer :



Ahmedabad.

Creative Bite : +91 98254 91178



A COMMUNITY FOR LIFE'S **ACHIEVERS**



## REFLECTION OF THE MOST COMFORTING LIFESTYLE

Created with unmatched quality standard. A contemporary architectural style keeping all tastes in mind. Everything for everyone. Loaded with good amenities and 2 BHK flats in Ahmedabad that gives you the opportunity to 'live your life, your way'.







GROUND FLOOR PLAN





# TYPICAL FLOOR PLAN

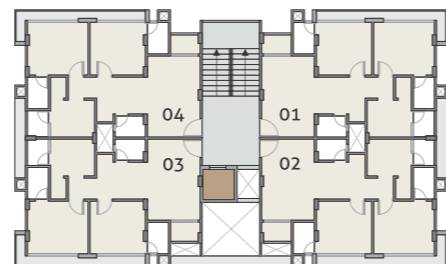
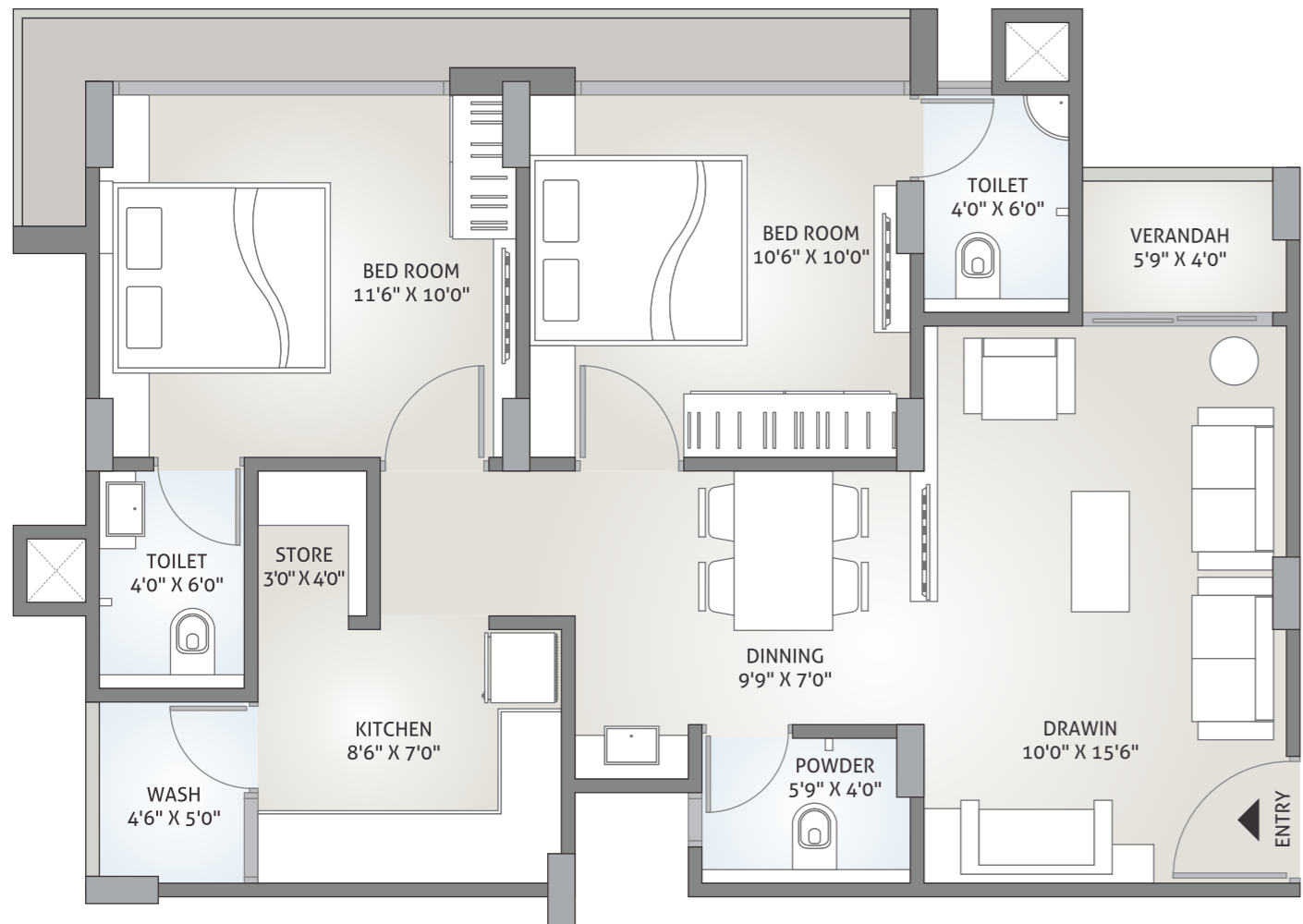


12.00 MT. WIDE T.P. ROAD

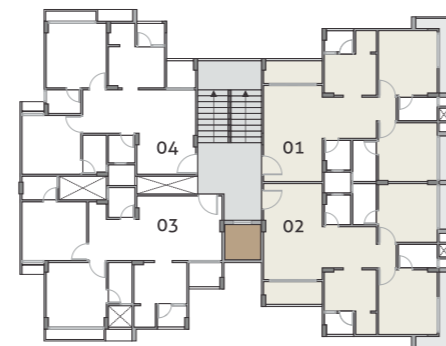
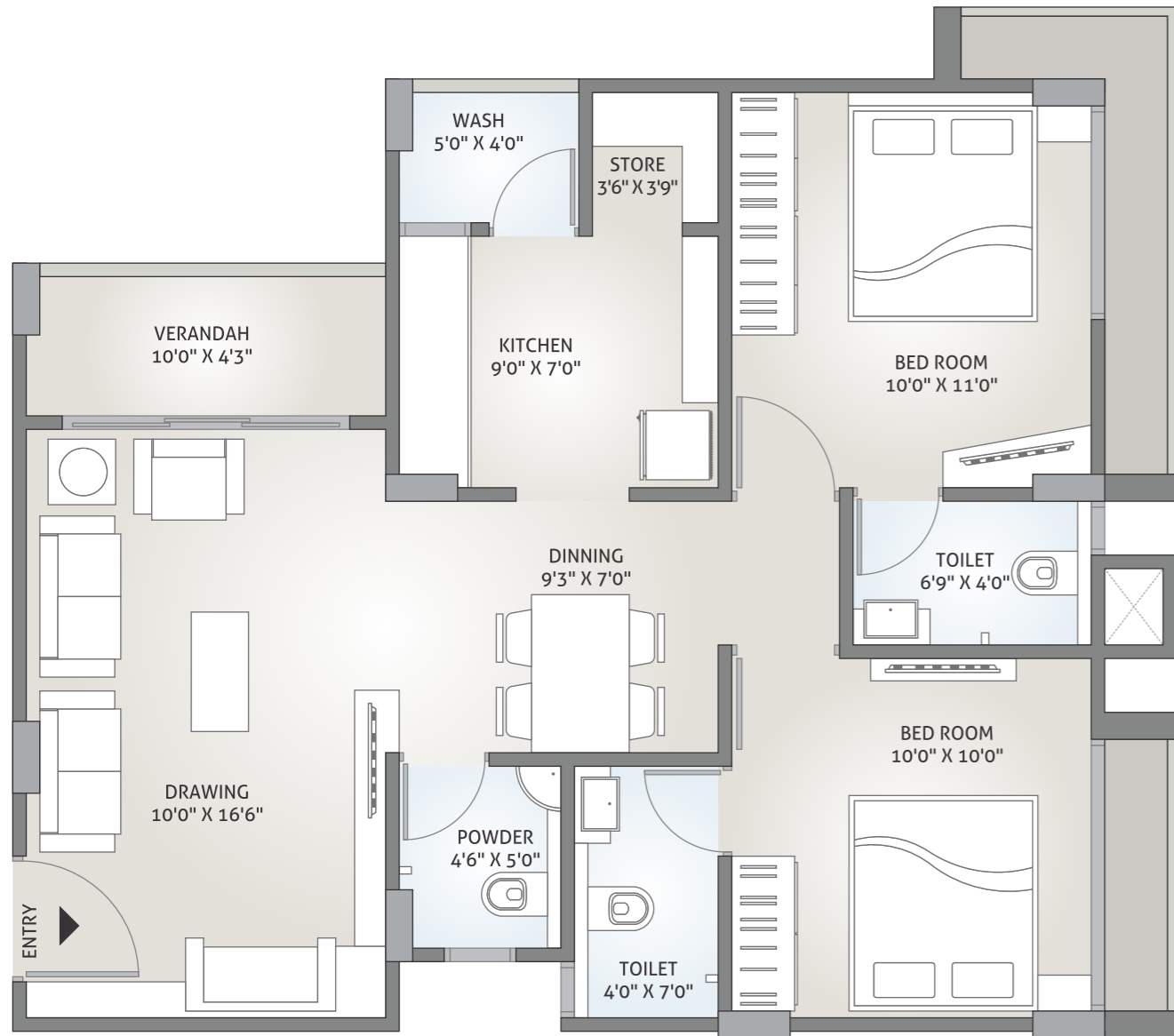




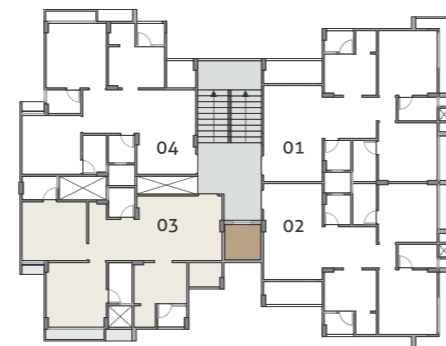
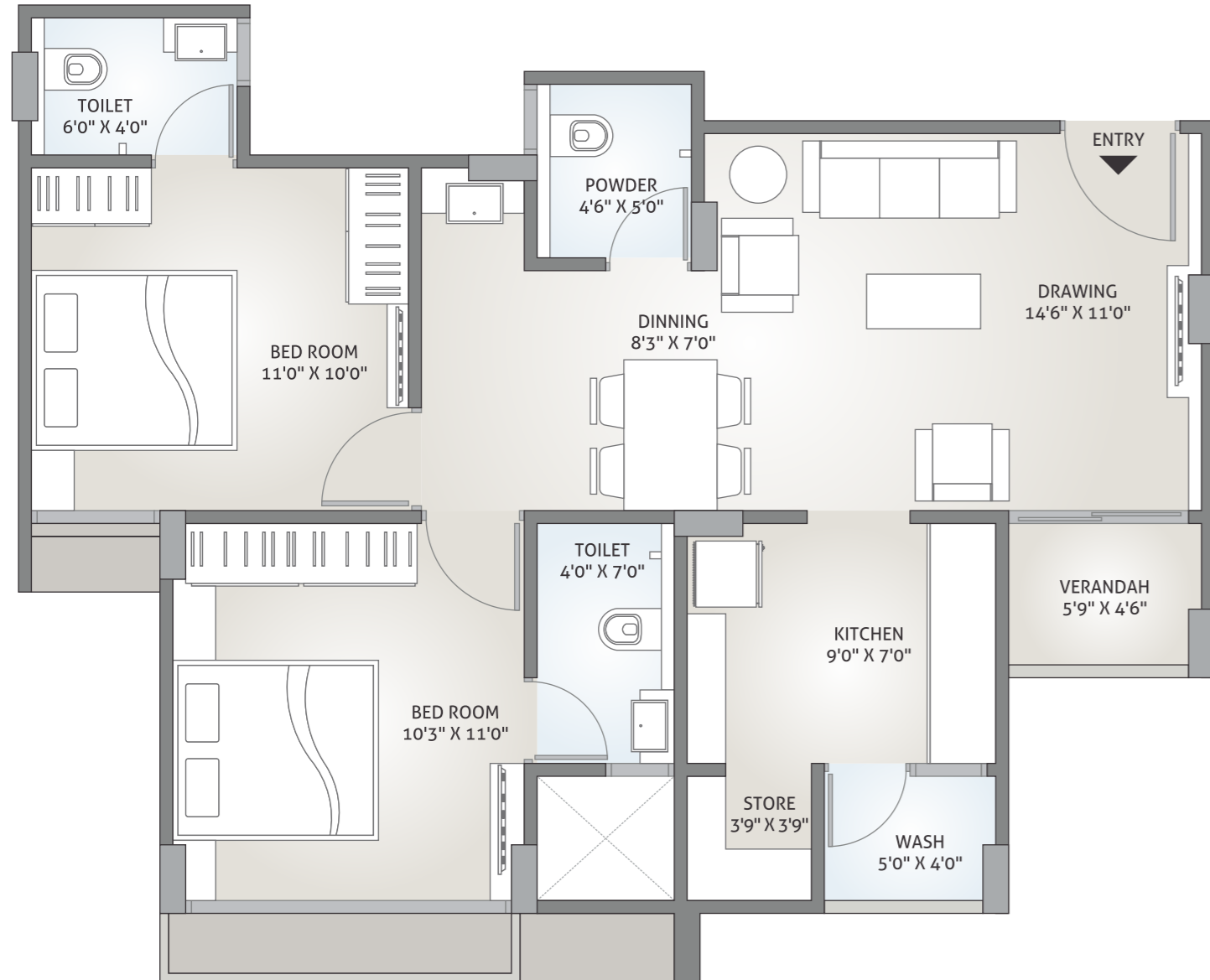
TYPE - A  
BLOCK A & D



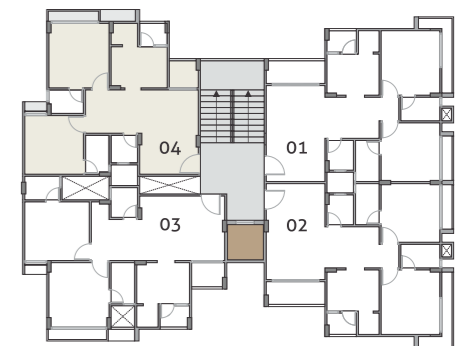
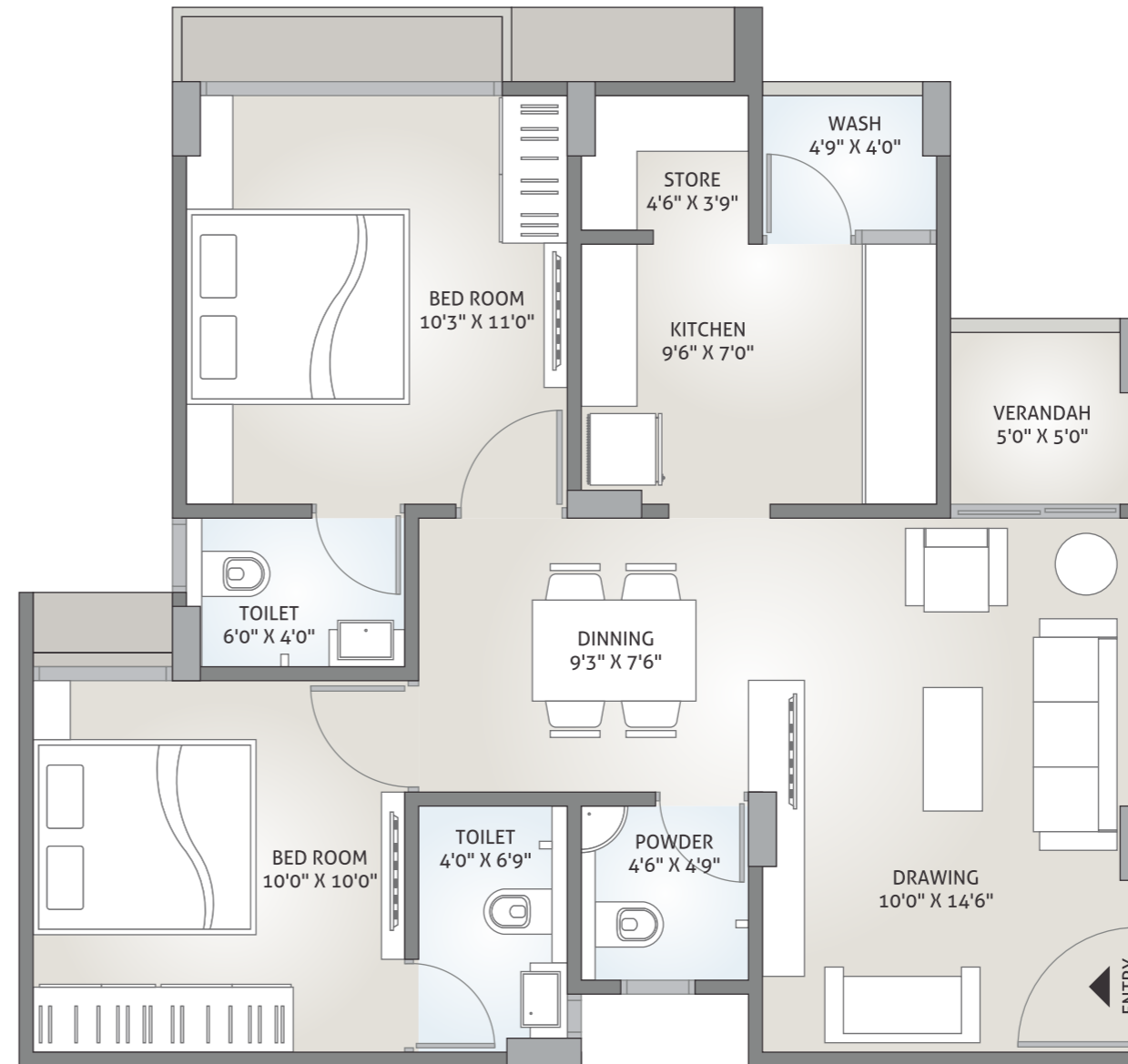
TYPE - B  
BLOCK B & C



TYPE - C  
BLOCK B & C



TYPE - D  
BLOCK B & C





## SPECIFICATIONS FOR RESIDENCE

### FLOORING

- Vitrified flooring in the entire residence.
- Entrance foyer with vitrified flooring.
- Lift Lobbies with marble flooring.
- Lift wall cladding in marble.
- Staircase with marble flooring.

### KITCHEN

- Vitrified flooring.
- Dado till 2' above platform with ceramic tiles.
- Stainless steel sink.
- Granite Platform.

### WASH AREA

- Flooring with kotah stone.
- Dado till 3' with ceramic tiles.

### BALCONY/VERANDAH

- Flooring with anti skid ceramic tiles.
- Glass railing and metal.

### WINDOWS

- Aluminum powder coated windows with sliding doors.
- Green Marble on window sills.

### DOORS

- Main Door - Flush Doors with natural Veneer finish and wooden frame.
- Other Doors - Flush Doors with both side paint with wooden frame.

### TOILETS / BATHROOMS

- Concealed Plumbing.
- Flooring with ceramic tiles.
- Bathroom dado till 7' height with ceramic tiles.
- Branded sanitary wares and CP fittings.

### ELECTRIFICATION

- Concealed 3phase electrical copper wiring.
- Modular switches.
- ISI wires, MCB and ELCB.

### COLOR

- Internal walls finished with wall putty.
- Weather shield acrylic emulsion paint for exteriors.

## SPECIFICATIONS FOR COMMERCIAL

### FLOORING

- Vitrified Tiles in all shops.

### TOILETS/BATHROOMS

- Concealed Plumbing.
- Flooring with ceramic tiles.
- Bathroom dado till 7' height with ceramic tiles.
- Branded sanitary wares and CP fittings.

### ELECTRIFICATION

- Concealed 3phase electrical copper wiring.
- Modular switches.
- ISI wires, MCB and ELCB.



## LOCATION MAP

